



# NICE PINS SIDE TABLES

## Set of three tiered side tables

Crafted from solid steel, the Nice Pins nest of side tables has been designed as a collection of three tables, that can be displayed as a single tiered option or can also sit beautifully as individual pieces. Each table features a leather foot on one of its three legs.

RA | collab

# NICE PINS SIDE TABLES



## STEEL TABLE OPTIONS

---

METAL  
FINISHES:

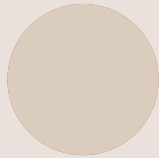


BRONZE  
PATINA



BLACK  
PATINA

POWDER  
COAT  
COLOURS:



RIVERGUM  
BIEGE



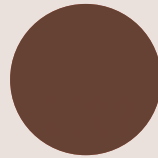
DUNE



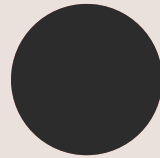
MAGROVE



TEXTURED  
CORETON



TERRAIN



BLACK

---

## FOOT OPTIONS

---

LEATHER:



NEW  
COGNAC



SIENNA

---

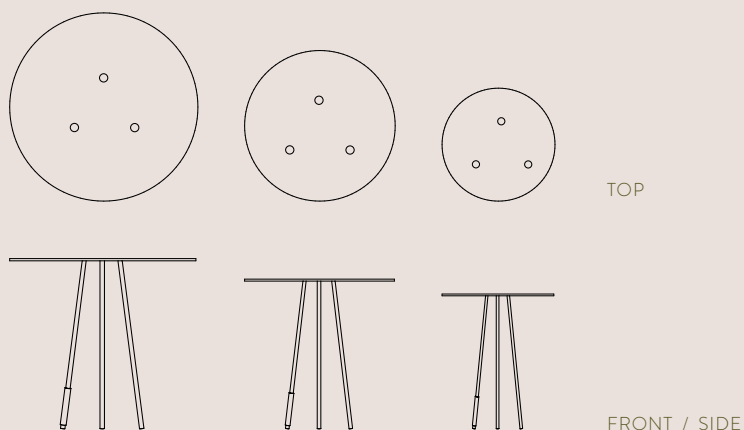
MANUFACTURED IN AUSTRALIA  
RA COLLAB  
WITH DROF  
DESIGN  
CRAFTED &

RA | collab

# NICE PINS SIDE TABLES



## TECH SPECS



**Dimensions:** Table 1 / 500 D x 500 H  
Table 2 / 400 D x 450 H  
Table 3 / 300 D x 400H

Custom sizes available on request.

**Materials:** Steel base with stone insert

**Lead time:** 10-12 weeks. Lead times may vary during peak periods

**Suitability:** Indoor only

To make an enquiry or order please email:

[collab@residentavenue.com.au](mailto:collab@residentavenue.com.au)



# NICE PINS SIDE TABLES

## CARE & MAINTENANCE

### POWDER COAT METAL:

We recommend regularly wiping down the metal with a damp soft cloth to remove particles which can cause the surface to wear. Avoid any contact with liquid, heat and direct sunlight. We recommend soapy water to wipe down the surface.

### BLACKENED STEEL:

Blackened steel can oxidize over time and will provide a beautiful changing patina. Each table is unique & will show a range of variations. For cleaning please use a soft cloth & mild detergent.

### BRASS:

Being a natural product, be aware that the brass will age in time but that is the beauty of a natural material. For cleaning please use a soft cloth and mild detergent.

### LEATHER:

Leather is a natural product characterised by the markings that the animal has acquired during its life which may include creases and stretchmarks, scars and insect bites. We recommend wiping down the leather with a clean, damp cloth.



# NICE PINS SIDE TABLES

## WARRANTY

- Period of 3 years for the structural integrity of the furniture under 'normal use'.
- Chipping and scratches on powder coated metal due to wear and tear are not warranted.
- Metal pieces that are not specific to outdoor use that are exposed to the elements are not warranted.
- Raw metals oxidise and tarnish over time and are not considered faults of manufacturing.
- All materials sourced by external and independent suppliers that have unique and specific warranty details that can be obtained as required on request.
- Broken, missing or ceased attachments like leveling feet, rubber stoppers and felt pads are not warranted.
- Natural materials like solid and veneer timbers can vary in colour, natural figuration and texture. These are not considered faults.
- Movement, joint separation, bowing as a result of fluctuations in temperature and any damage caused by direct sunlight are not warranted.
- Day to day use and wear & tear that can cause scratches, expansion, colour changes, chips, burns, splits are not warranted.
- Painted and stained timber can chip, this is not warranted and considered as wear and tear through use of the item.

