



THE FREDRIC DINING TABLE

Solid Timber dining table

The Fredric solid timber dining table originated from our love for old refectory dining tables. A modern take on an old classic, it makes a captivating yet functional piece in both classic and contemporary interiors.

RA | collab

THE FREDRIC DINING TABLE



FINISHES & OPTIONS

TIMBER SPECIES: AMERICAN OAK
VICTORIAN ASH

TIMBER OIL FINISHES:



CLASSIC WHITE



NATURAL



RAUNCH SMOKE



OLIVE



EBONY

CENTRAL BEAM OPTIONS (AVAILABLE IN ABOVE TIMBER FINISHES ALSO)

METAL FINISHES:

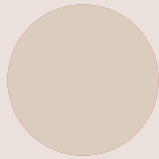


BRONZE PATINA



BLACK PATINA

POWDER COAT COLOURS:



RIVERGUM BIEGE



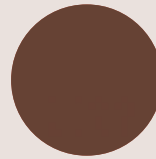
DUNE



MAGROVE



TEXTURED CORETON



TERRAIN



BLACK

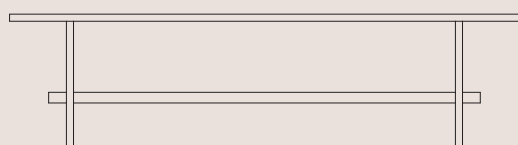
MANUFACTURED IN AUSTRALIA
RA COLLAB WITH PROJECT JOHNSTONE
CRAFTED &

RA | collab

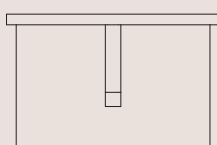
THE FREDRIC DINING TABLE



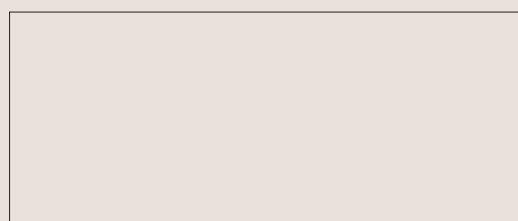
TECH SPECS



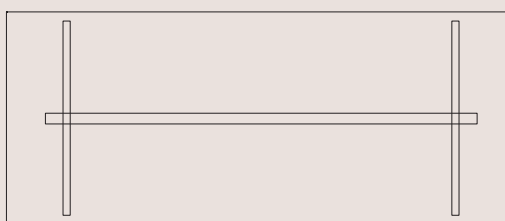
FRONT



SIDE



TOP



BELOW

Size options: 2800 x 1100 x 750 / Seats 6 - 8 people / Overhang at ends: 320mm
3000 x 1100 x 750 / Seats 8 - 10 people / Overhang at ends: 280mm
3000 x 1200 x 750 / Seats 8 - 10 people / Overhang at ends: 280mm

Custom sizes available on request.

Materials: Solid Timber table with steel or timber support beam
Lead time: 10-12 weeks. Lead times may vary during peak periods
Suitability: Indoor only

To make an enquiry or order please email:

collab@residentavenue.com.au



THE FREDRIC DINING TABLE



CARE & MAINTENANCE

TIMBER:

Timber is a natural product that will respond differently to each environment. We recommend you avoid extreme variation in temperatures and contact with liquids and heat. We recommend wiping down the timber regularly to remove dirt or dust. We do not recommend leaving any liquids sit on the timber surfaces as it will penetrate the timber and may cause staining. If you do spill water on the timber, we recommend wiping up the spills immediately with a cloth. The tone of the timber will change over time if it is exposed to UV light, so we recommend protecting the timber from direct and reflected sunlight.

POWDER COAT METAL:

We recommend regularly wiping down the metal with a damp soft cloth to remove particles which can cause the surface to wear. Avoid any contact with liquid, heat and direct sunlight. We recommend soapy water to wipe down the surface.

BLACKENED STEEL:

Blackened steel can oxidize over time and will provide some beautiful changing patinations. Each table is unique & will show a range of variations. For cleaning please use a soft cloth & mild detergent.

BRASS:

Being a natural product, be aware that the brass will age in time but that is the beauty of a natural material. For cleaning please use a soft cloth and mild detergent.



THE FREDRIC DINING TABLE



WARRANTY

- Period of 3 years for the structural integrity of the furniture under 'normal use'.
- Chipping and scratches on powder coated metal due to wear and tear are not warranted.
- Metal pieces that are not specific to outdoor use that are exposed to the elements are not warranted.
- Raw metals oxidise and tarnish over time and are not considered faults of manufacturing.
- All materials sourced by external and independent suppliers that have unique and specific warranty details that can be obtained as required on request.
- Broken, missing or ceased attachments like leveling feet, rubber stoppers and felt pads are not warranted.
- Natural materials like solid and veneer timbers can vary in colour, natural figuration and texture. These are not considered faults.
- Movement, joint separation, bowing as a result of fluctuations in temperature and any damage caused by direct sunlight are not warranted.
- Day to day use and wear & tear that can cause scratches, expansion, colour changes, chips, burns, splits are not warranted.
- Painted and stained timber can chip, this is not warranted and considered as wear and tear through use of the item.

