



THE FLORENCE DINING TABLE

Steel & Stone round dining table

Merging classic and modern influences, the artisan-crafted Florence dining table features a turned steel leg, with a water blown centerpiece and custom curved feet. A magnificent stone top continues the durability and stunning design.

RA | collab

THE FLORENCE DINING TABLE



TABLE TOP OPTIONS

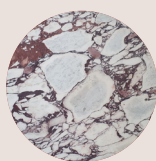
STONE
OPTIONS:



TUNDRA
GREY



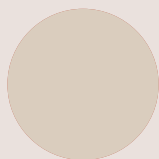
TRAVERTINE
CLASSIC GREY



VIOLA

STEEL BASE OPTIONS

POWDER
COAT
COLOURS:



RIVERGUM
BIEGE



DUNE



MAGROVE



TEXTURED
CORETON



TERRAIN



BLACK

RA COLLAB
WITH DROF
DESIGN & APEX
STONE

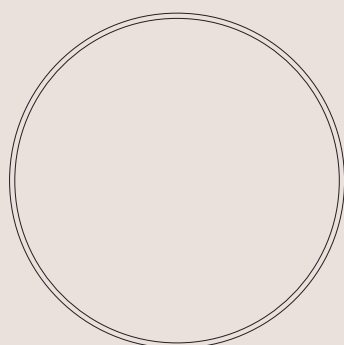
CRAFTED & MANUFACTURED IN AUSTRALIA

RA | collab

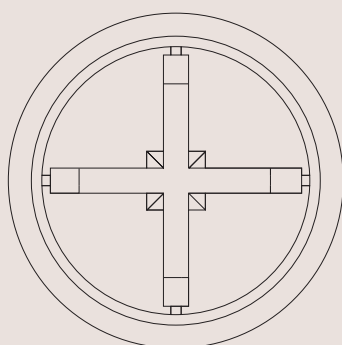
THE FLORENCE DINING TABLE



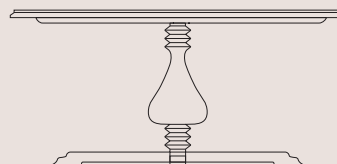
TECH SPECS



TOP



BELOW



FRONT

Size options: 1200 x 750
1400 x 750
1600 x 750

Custom sizes available on request.

Materials: Steel table with stone table top
Lead time: 10-12 weeks. Lead times may vary during peak periods
Suitability: Indoor only

To make an enquiry or order please email:

collab@residentavenue.com.au



THE FLORENCE DINING TABLE



CARE & MAINTENANCE

TIMBER:

Timber is a natural product that will respond differently to each environment. We recommend you avoid extreme variation in temperatures and contact with liquids and heat. We recommend wiping down the timber regularly to remove dirt or dust. We do not recommend leaving any liquids sit on the timber surfaces as it will penetrate the timber and may cause staining. If you do spill water on the timber, we recommend wiping up the spills immediately with a cloth. The tone of the timber will change over time if it is exposed to UV light, so we recommend protecting the timber from direct and reflected sunlight.

POWDER COAT METAL:

We recommend regularly wiping down the metal with a damp soft cloth to remove particles which can cause the surface to wear. Avoid any contact with liquid, heat and direct sunlight. We recommend soapy water to wipe down the surface.



THE FLORENCE DINING TABLE



WARRANTY

- Period of 3 years for the structural integrity of the furniture under 'normal use'.
- Chipping and scratches on powder coated metal due to wear and tear are not warranted.
- Metal pieces that are not specific to outdoor use that are exposed to the elements are not warranted.
- Raw metals oxidise and tarnish over time and are not considered faults of manufacturing.
- All materials sourced by external and independent suppliers that have unique and specific warranty details that can be obtained as required on request.
- Broken, missing or ceased attachments like leveling feet, rubber stoppers and felt pads are not warranted.
- Natural materials like solid and veneer timbers can vary in colour, natural figuration and texture. These are not considered faults.
- Movement, joint separation, bowing as a result of fluctuations in temperature and any damage caused by direct sunlight are not warranted.
- Day to day use and wear & tear that can cause scratches, expansion, colour changes, chips, burns, splits are not warranted.
- Painted and stained timber can chip, this is not warranted and considered as wear and tear through use of the item.

